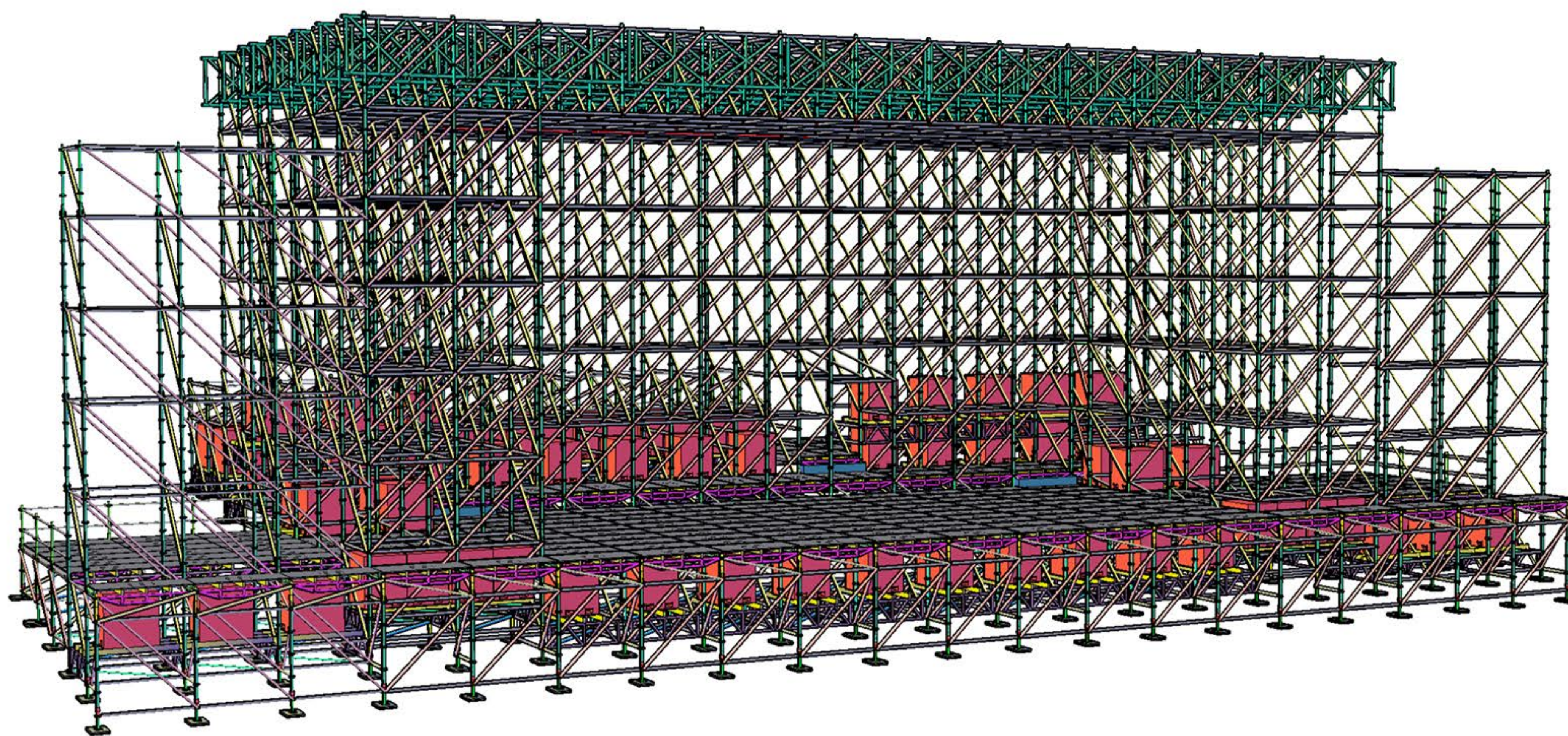


AES Club Stage

A build and technical overview

www.aes.ae

ALL
EVENTS
SERVICES



The AES club Stage is a bespoke scaffold stage roof designed and engineered by AES, offering a similar product to festival touring stage systems.

Club Stage Facts

41.4m x 18.5m
Stage size

20m x 10.5m
Performance Area

12.4m
Roof Height

1.5m
Stage deck starting height

15T
Rigging load in roof for 7s

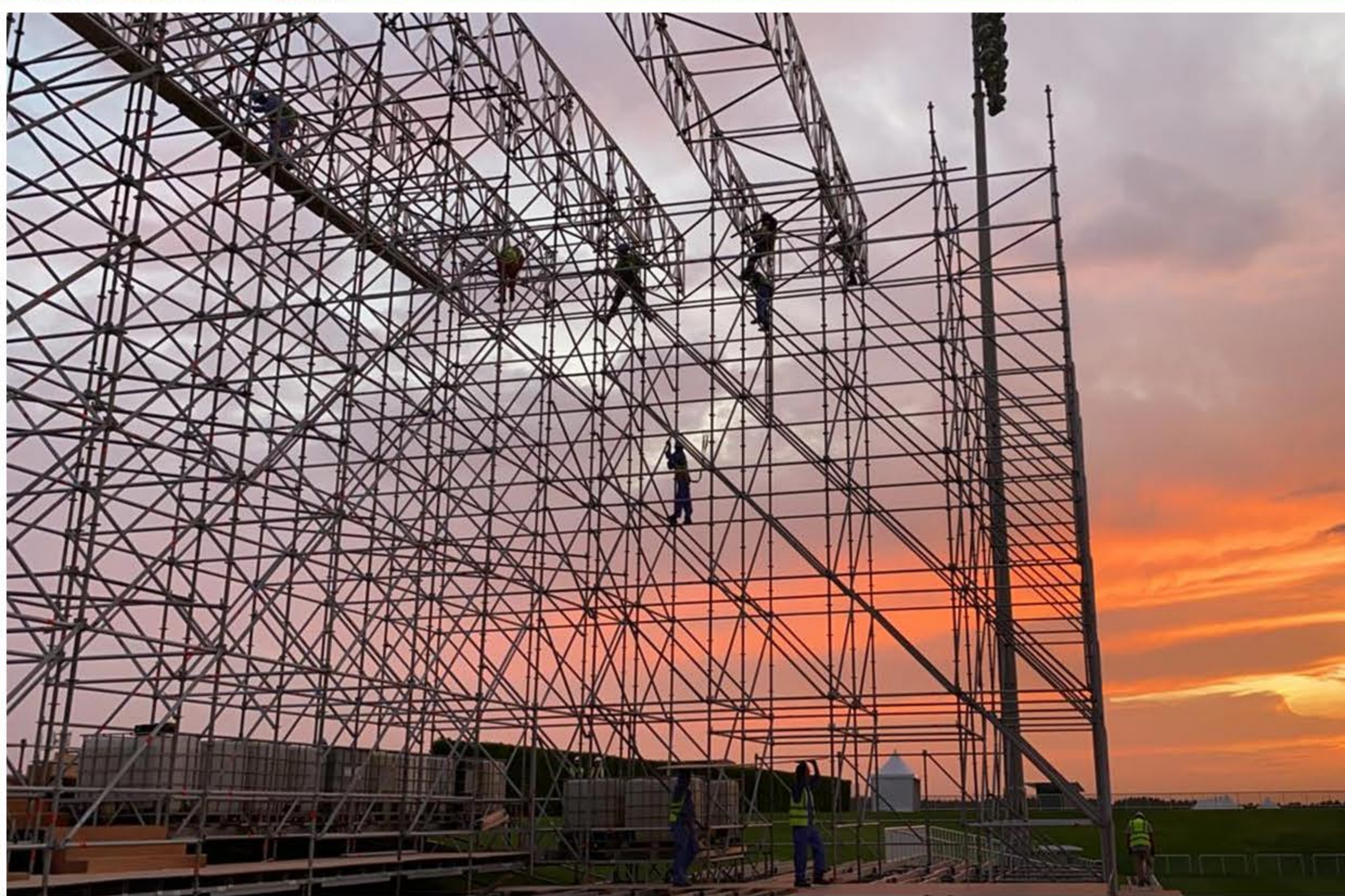
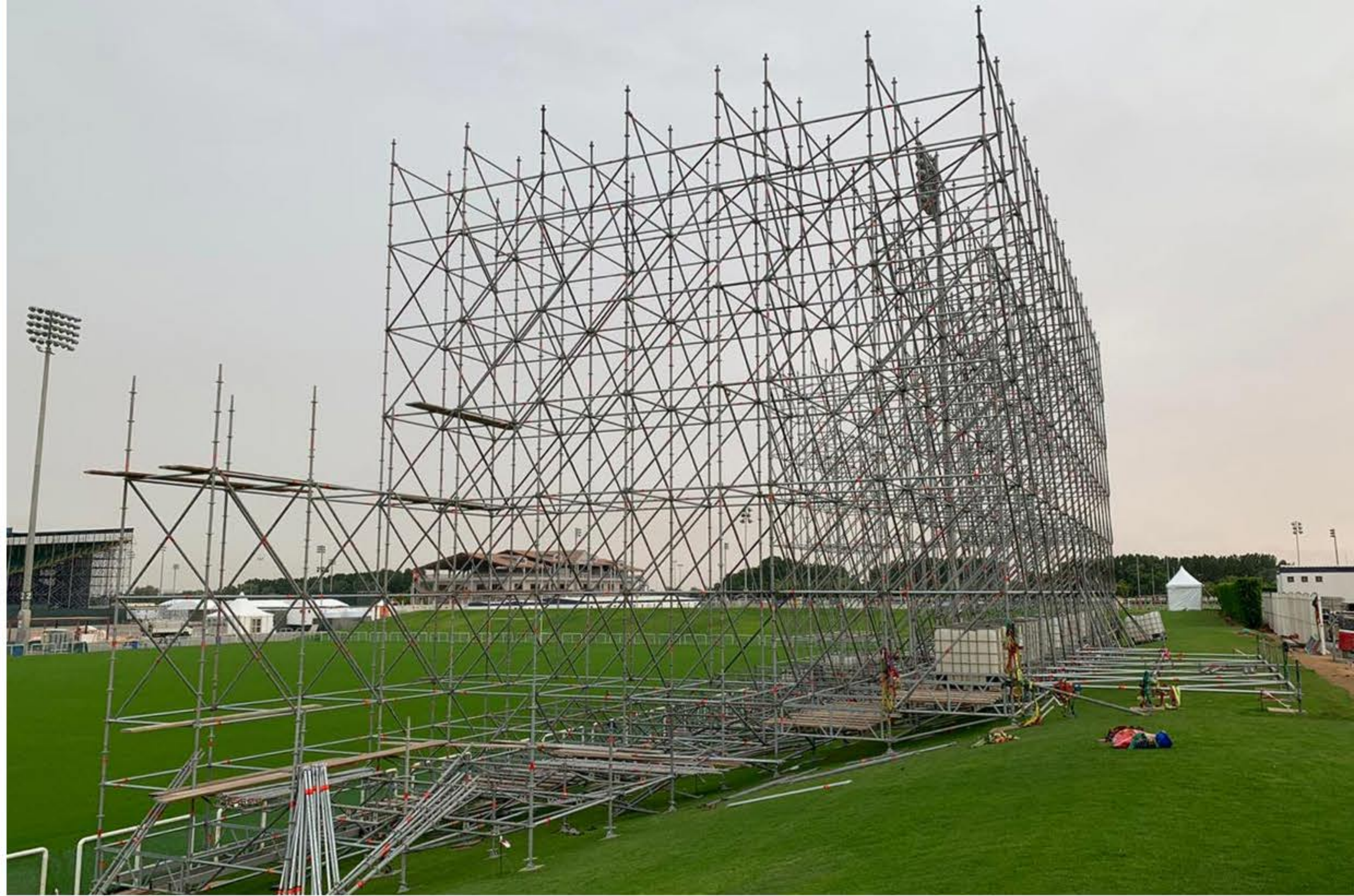
The AES Club Stage is a scaffold ground support roof that AES designed and engineered in December 2019, for the Kyle Minogue concert at the Emirates Rugby 7s.

Due to the location on site and the timings of the build, AES were required to provide a stage that had similar characteristics to our festival stage systems but could be built on a grass bank alongside the rugby pitch.

The Club stage has a scaffold walled house, 4m deep, with aluminum truss installed to span the 20m performance area. Additional walls were built for stage wings supporting the main PA and side fills. The truss roof was made waterproof using 2m black vinyl sheets, which protected the stage, whilst the walls of the stage were finished with black netting.

85T of ballast was required for the build of this stage. Due to the angled sloped bank, approx. 1/3 of the ballast was positioned under the down-stage edge and the remaining 50+ tonnes were stacked up-stage behind the performance area. All calculations were taken by the AES engineers based on the sloped terrain and the wind tolerances.







ALL
EVENTS
SERVICES

www.aes.ae info@aes.ae
(+971) 4 321 5599

Street 18, Al Quoz Industrial Area 1, 333986 P.O BOX
Dubai, United Arab Emirates